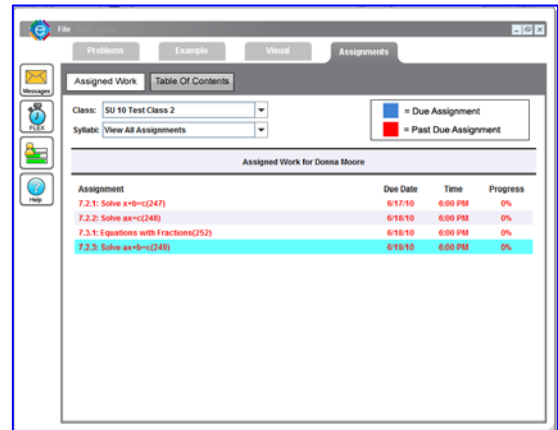


Student Quick Start

EnableMath is the complete solution for enabling a student to gain procedural fluency in arithmetic and algebra. It builds on the proven need for practice to mastery. It uses advanced proprietary technologies to make practice a productive, personalized experience for every student with content readiness assessments, flexible individualized syllabi, adaptive assignment of problems, mastery as the goal of each assignment, step-through examples for every problem type, and dynamic visual concepts to build understanding. Our content runs from basic arithmetic through algebra.



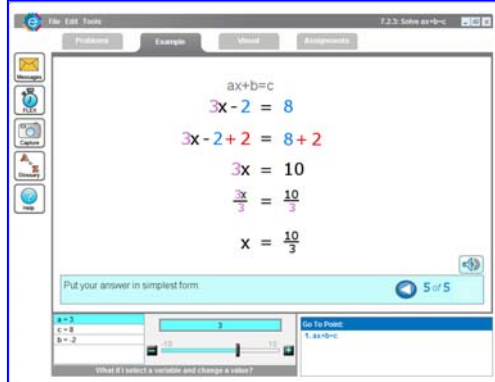
1. **Select an Assignment and start doing problems.** Just press **Submit** once you fill in the answer. Press **Next** to go to the next problem. If you get the answer wrong take a look at the correct answer in the **Instructions Box**. It is a good idea to always read the instructions before you start doing problems. If you need help go to the **Example** to step-through a similar problem or the **Visual** to “see” the concept. Press **Reset** to start the assignment over.



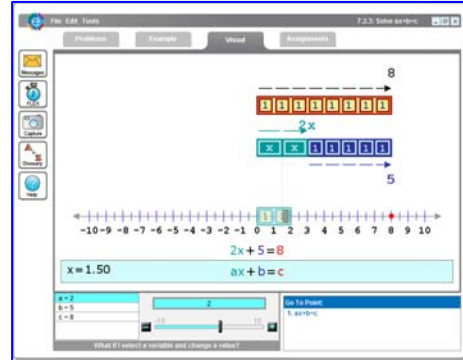
2. **EnableMath is adaptive.** As you work through the assignment you will notice the problems get harder. The red bar shows the *problem difficulty level* and the green bar shows your *progress*. We are always giving you new problems adapted to your progress level. If you get a problem wrong and you don't know how to do it, open the **Example**.



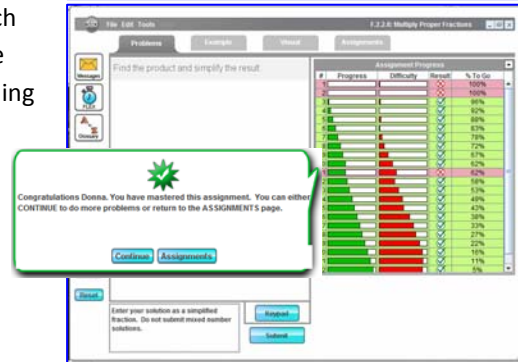
3. **Examples step you through similar problems.** You can even create a new problem by changing the values. In addition to the **steps** you walk through there are often two or more **Points** (bottom right), each representing a different type of problem. Pick the Point you need to solve and carefully follow the steps to solving it so that you can repeat them with a real problem. Click on the speaker to hear the instructions.



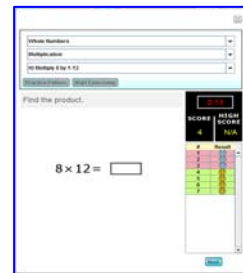
4. **EnableMath helps you visualize math.** Math is a visual language and, if you are a visual learner, you should look at and play with the **Visuals**. They are not just pictures, they are dynamic images that enable you to see math in action. You will find that spending a little time playing with the Visuals will enable you to understand the concepts.



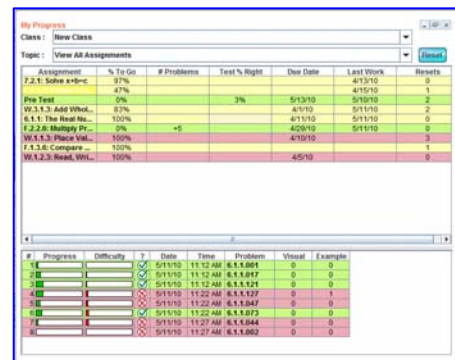
5. **Mastery.** You complete an assignment when you reach mastery. Math is like other skills; you need to practice until you have mastered it. While mastery is like learning to ride a bike - once you have mastered it you never really forget it - you will still want to keep in practice and stay fluent. You can return to the assignment at any time to practice a little more. It is a good idea to do this before a test.



6. **Fact Fluency. FLEX** builds fact fluency. You try to solve as many addition, subtraction, multiplication, or division problems as you can in one minute. We keep your high score and let you flex your brain as often as you want. FLEX is easy and fun. Speed and accuracy in math facts are critical to learning and doing algebra. Having fluency means you make fewer mistakes and you do problems faster and with less effort. So FLEX often.



7. **Follow your progress.** Just press the My Progress button to see the assignments you have done along with those you need to do. You can even review the problems that you did in each assignment. You might want to go over them and see if you can solve the ones you got wrong. Our research shows that most students who do 75% of their assignments to mastery get A's or B's in their courses. So complete assignments to mastery.



8. **A Personalized Program.** The **EnableMath Advanced Student Management System** makes it easy for your teacher or guide to assess your knowledge, personalize your assignments, track your progress and communicate with you online through the message system. You can even send live screen shots of examples back and forth to help you gain understanding and master assignments from arithmetic through algebra.

